



# Ogden-Weber Technical College

# FRAUD PREVENTION

## Newsletter

2025 Q1

### Contents

- Welcome
- Identifying Fraud
- Reporting Fraud
- Did You Know?

Welcome to the 2025 Q1 issue of the Ogden-Weber Tech College Fraud Prevention Newsletter! This newsletter is designed to keep faculty and staff informed and aware of how to prevent fraud, what to look for, and how to report fraud.

### What is Fraud?

Fraud is a wrongful or criminal deception intended to result in financial or personal gain. According to the Association of Certified Fraud Examiners (ACFE) the fraud triangle (right) is a model for explaining the factors that cause someone to commit fraud. Though we cannot control a person's rationalization or incentive, we can focus on the opportunity. We can do this by keeping good controls or locking up items, reporting known or suspicious acts, and generally being aware of those around us and their actions.



Each newsletter will provide tips in the "Did You Know" section to help you identify forms of fraud and we ask for your help in reporting it.

You can do your part in stopping fraud in its tracks. Report any suspicious or known acts of fraud. You can do this anonymously, if you prefer.

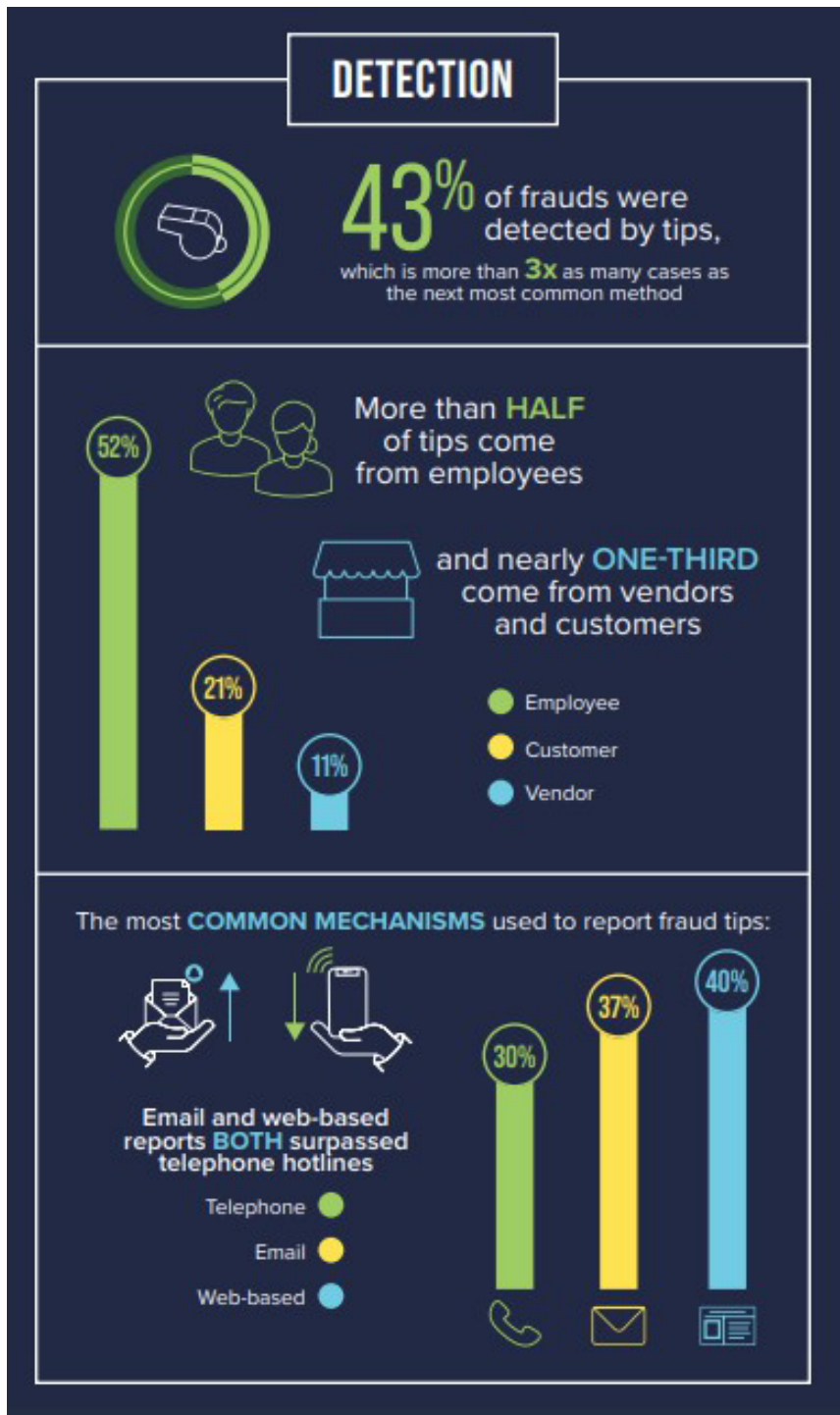
You can report in one of two ways:

1- Download the [LiveSafe](#) app and choose the option to report tips. Reports are kept on our campus, are confidential, and can be anonymous.

or

2- Go to: [www.otech.edu/fraud](http://www.otech.edu/fraud) and click the ethics point reporting hotline. This will take you to the USHE site where you can make a report.

# DID YOU KNOW?



ACFE: Occupational Fraud 2024: A Report to the Nations ®

This is where you come in....we are asking for your help in identifying and reporting fraud. It's one of our guiding principles: **INTEGRITY IS ESSENTIAL.**

## Some Examples of Workplace Fraud

- Altering inventory records to account for lost, misplaced, or stolen items.
- Claiming sick leave to attend to personal business
- Claiming hours worked that were spent on personal or unrelated business
- Going shopping or performing other personal errands instead of attending training, a conference, or otherwise "on the clock."
- Managing a side business during work hours
- Seeking reimbursement for expenses not incurred or personal items not for business use
- Travel reimbursement misstatements
- Removing product, materials, or supplies that were purchased with college funds or donated to the college for your own personal use.